



CALIFORNIA | NEVADA

DEATH VALLEY & RED ROCK

MOUNTAIN BIKE TOUR



- Families with Older Kids
- Families with Younger Kids
- Private Tours and Custom Tours
- Solos, Couples & Friends
- Departure: Las Vegas, NV
- Tour Offered: Feb, Mar, Apr, Oct, Nov
- Departs On: Monday
- Duration: 5 Days
- Lodging: First-Class Camping or Casual Inns
- Fitness Level: 1-3
- Technical Level: 1-3
- Elevation Range: 0 - 6,000 ft.

Don't expect to see wilderness, expect to experience wilderness. While big swathes of North America deals with snow and icy roads, we consider our great fortune: to enjoy exemplary outdoor wintertime adventure in the heart of the Mojave Desert, from Death Valley National Park to Red Rock Canyon. Roam America's largest national park outside Alaska: 3,373,063-acre Death Valley National Park. Despite its rather foreboding name, Death Valley represents a stellar trekking destination. Hikers and bikers, climbers to rock hounds come to marvel at spring's astounding wildflower blooms, not to mention the mild temperatures of fall and winter. Outdoorspeople will relish no less than 3,000-square miles of headspace, while cyclists find enviable elbowroom afforded by 350-miles of road and trails. (A full 91% of Death Valley is designated wilderness.)



We cycle across the big valley floor, stopping to visit historic sites, most of them accessed by 1930s-era Civilian Conservation Corps (CCC) roads. Almost immediately we come to appreciate a very subtle legacy of the CCC: the bygone wisdom seen in roads built to respect, rather than conquer the landscape. From slick Kevlar tires to thick Vibram soles, we navigate around and visually inhale sunbaked foothills, knolls, and stacks of boulders etched in yellow clay, rose and tan. These fantastic landscape features would serve as the backdrop for the first Star Wars film, Death Valley standing in for the planet Tatooine. Each day in this storied place—contemplating 20-mule team wagons, Death Valley Scotty, the lost 49ers—you wake up in unfettered horizon. The evenings are given over to serious unwinding—"Prickly Pear margaritas, anyone?"—wrapped in great theatre: watching the two-mile high, 60-mile long Panamint Mountains, the valley's defining range to the West, transition from shades of cool blue to a deep, purple bruise as the evening light drops away. In the other direction, the Amargosa range to the east is nothing less than radiant, bathed in bronze tones. We are the authentic conscience of adventure outfitters: our desert West trips represent the standard by which others judge. Or aspire to. Reflexively, when you experience these lands by mountain bike, led by people who have a deep connection to Red Rock and Death Valley, you'll quickly learn this is not a place to be endured, but rather a world-class outdoor recreation destination.



THE ESCAPE ADVENTURES EXPERIENCE

For over 25 years, the hallmark of an Escape Adventures tour is Personalized, hands-on service, before, during, and after each trip.

OUR PEOPLE

Our Trip Leaders are the best in the business. Trained personally by the owners, our WFR certified Leaders understand the areas you ride and the safety of the group.

OUR COMMITMENT

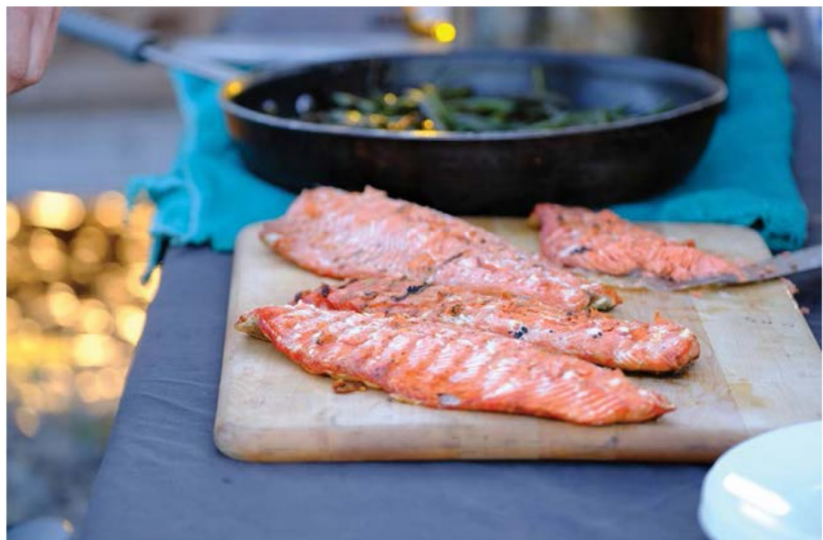
We don't just preach environmental awareness, we live it. We recycle 90% of our waste and run our LEED Platinum facilities with solar and wind power. Additionally, our facilities are net zero energy (we produce more energy than we consume) which makes us the only commercial outfitter in the world who is net positive energy.

OUR FOOD

Our Leaders prepare meals on the trip with an emphasis on fresh, local and organic foods, ensuring you have the fuel you need to ride, and a delicious, meal at the same time.

OUR SUPPORT VEHICLES

We provide a support van and trailer for every 9 guests on all of our trips so you can count on us to be there when you need us.





Day 1 | Spicer Ranch

After meeting in Las Vegas we shuttle to Beatty, Nevada and the all new Spicer Ranch Mountain Bike Park. This park is purpose built mountain bike trails meshed with wild burro trails making a fantastic array of riding! Plutonium Ridge (our favorite), takes us far into the backcountry of the Mojave Desert overlooking Beatty Wash. After descending a fast ridge line back to Spicer Ranch, and if your legs are willing, try out the Dynamite Trail. Exhilarating 2 mile loop!

Total Miles | 11 Miles

Feet Gain | 800

Camping/Inn | Spicer Ranch/ El Portal Motel



Day 2 | Titus Canyon

Titus Canyon - where we'll ride up and over White Pass and Red Pass to the top of the Grapevine Mountains. The reward for our climb? A scenic 5,600-foot descent through Titus' increasingly narrow canyon walls to the valley floor. After this spectacular ride, we'll shuttle back to our camp in Monarch Canyon.

Total Miles | 15-26 Miles

Feet Gain | 109-2395

Camping/Inn | Monarch Canyon/Stovepipe Wells





Day 3 | Chloride Cliffs

Chloride Cliffs - Leaving camp, we ride up the old Chloride Cliffs jeep road for a rare king-of-the-hill view of both the Badwater lowlands and Mt. Whitney. Today's highlight is a chance to prospect abandoned crystal mines in the top of the mountain. Later, we'll descend nearly 2,000 feet back to camp! In the afternoon, an optional two-mile hike through Monarch Canyon offers the opportunity to explore a ghosted stamping mill and a clear portal view from atop a seasonal waterfall.

Total Mileage | 12 Miles
Feet Gain | 1937
Total Hiking Mileage | 2 Miles
Hiking Feet Gain | 294
Camping/Inn | Monarch Canyon/Stovepipe Wells



Day 4 | Sand Dunes and Cottonwood Valley

After packing up, we descend to the bottom of Death Valley on mountain bikes to Mesquite Sand Dunes. Here we will have an hour to explore the beauty of Death Valley and the relaxing windblown dunes under our feet. Take a quick stop at Stovepipe Wells for some ice cream and lunch than it's off to Red Rock Canyon, West Las Vegas. Once in Red Rock, get ready for some of the fastest, finest single-track in the west! We'll follow some of our favorite trails in Cottonwood Valley for the remainder of the afternoon before retiring in the Element Hotel. We will be having dinner at Bonnie Springs, Old Nevada Ghost Town. Can you say rustic?

Total Mileage 19 – 30 Miles
Feet Gain | 410 – 1152
Hike the Sand dunes
Inn | Element Hotel





Day 5 | Red Rock Canyon National Conservation Area -Mustang Trails

We start our final day riding Red Rock's Mustang Trail single-track system. Initially stomped out by horses and burros over 100 years ago, these trails are now shared by mountain bikers and wild mustang descendant's who roam free and are protected in the National Conservation Area. We then ride to the small town of Blue Diamond for lunch before shuttling back to Las Vegas.

Total Mileage | 15 Miles
Feet Gain | 1102



Daily Activities

Day	Activity	Easy		Moderate		Seasoned	
		Miles	Feet Gain	Miles	Feet Gain	Miles	Feet Gain
1	Mountain Biking			11	800		
2	Mountain Biking	15	109	21	1615	26	2395
3	Mountain Biking					12	1937
	Hiking			2	294		
4	Biking	19	410	30	1512		
	Hiking	Hike Sand Dunes					
5	Mountain Biking			15	1102		

Mountain Bike Tour Fitness Levels



		Mountain Biking			Multi-Sport Activities			
Level	Hours of Activity	Total Elevation Feet Gain	Mountain Bike Miles	Hiking Miles	Rock Climbing	Canyoneering	Rafting/Canoeing	
Easy	1	700	5-10	1-5	Low Angle Large Handholds	Hiking/No Ropes	Relaxed, Slow Moving Water	
	2	1200	10-15	5-8	Level 1 PLUS Small Handholds	Level 1 PLUS Occasional Ropes	Level 1 PLUS Easy Rapids Wide Channels	
Moderate	3	1800	15-25	8-10	Level 2 PLUS Steep Angles	Level 2 PLUS Easy Rapels	Level 2 PLUS Waves, Up to 4' Narrow Channels	
Seasoned	4	2200	25-35	10-12	x	Level 3 PLUS Complex Ropes, Multiple Rapels	Level 3 PLUS Long Rapids	
	5	3000	35-50+	12-16+	x	x	Level 4 PLUS Spinning, Large Waves	

Mountain Biking Tour Technical Levels



Level	Description	
Easy	1	Maintained Gravel Roads, Easy Grades
	2	Level 1 PLUS Unmaintained Dirt Roads, Maintained Singletrack Trail
Moderate	3	Level 2 PLUS Moderate Grades, Some Unmaintained Singletrack
Seasoned	4	Level 3 PLUS Rocky Terrain – PLUS Longer, Steeper Ascents & Descents
	5	Level 4 PLUS Some Exposed Sections Of Trail, Some Loose Climbs & Descents

BICYCLE RENTALS

Escape Adventures rents quality bicycles. We will fit you with a high quality, durable and safe ride. Our chosen bike is equipped with an aluminum frame designed for a smooth, comfortable ride. Our mountain bikes are full-suspension, lightweight and adjustable. We replace our rental fleet each season to ensure all our rentals meet our high standards. For those who are touring with a companion who may not be as fit or need a little help up the hills, we now have eMountainbikes (electric pedal assist) available on select tours. Availability of bikes are specific to your destination and should be confirmed in your itinerary.

Specialized Stumpjumper FSR Full Suspension



The Stumpjumper FSR 29er may be the most amazing designed alloy bike ever made. It will exceed all of your expectations of how a trail bike should ride. 1X11 gearing, hydraulic brakes, and the latest and best suspension technology available.

Santa Cruz HighTower Full Suspension



The Hightower 29er brings versatility and sports 135mm of rear travel, fast-rolling 29er wheels, and a 67-degree head angle. The Hightower gives you the extra bit of confidence, impeccable trail manners, and pedals efficiently.

Specialized RipRock 20" and 24"



Dirt, street, trails—the RipRock 20" and 24" is purpose-built for fun and safety and a favorite among the younger riders.

Cannondale Mountain Bike Tandem 29er



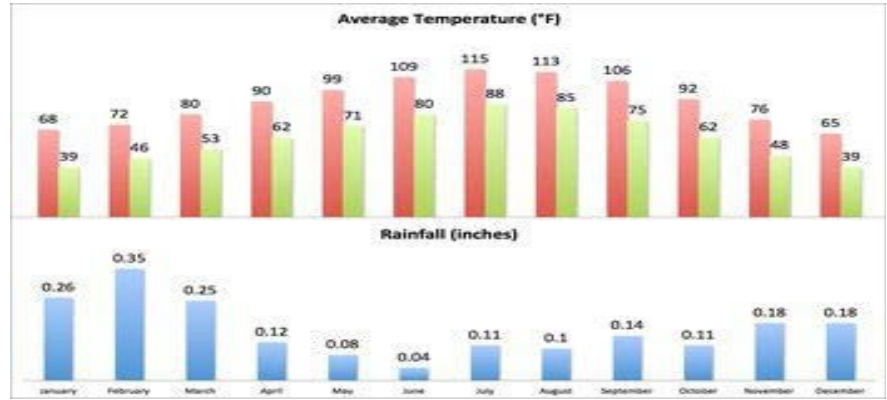
For more than 25 years, Cannondale Tandems have been revered for their light weight, durability, and flex-free handling. Grab a partner and enjoy the ride!

All bicycle rentals are equipped with flat pedals and a complimentary water bottle. Helmet and clipless pedals are available upon request and are included in the rental. Please specify your individual needs when confirming your reservation.

For more information call 800-596-2953.

WEATHER

You will be riding and sleeping at elevations over 4,000 ft. for this trip. Weather predictions in this area are often unreliable due to the elevation, so it is best to be prepared for cold evenings and inclement weather. Please use the following locations when checking the weather online: **DEATH VALLEY**



MOUNTAIN BIKE TOUR

For optimal physical preparation, we recommend that you ride at least several hours per week during the month preceding the tour. During the tour you will be on your bike every day, and we can assure you that an unprepared bottom is a sore one! If you can't ride your bike, or don't own one, take a spin class at your local gym a few times a week. Your level of fitness does affect how much you enjoy your tour.



HIKING TOUR

To prepare for the tour, we recommend that you hike, jog or run at least several hours per week during the month preceding the tour. Walk/run in the shoes and socks you are bringing on the trip. This will help prevent blisters and sore feet. Your level of fitness does affect how much you enjoy your tour. Check your specific itinerary for an idea of your average daily mileage and level of strenuousness – then train appropriately.



PACKING

Luggage is limited to one small soft-shell suitcase or medium/large sized duffel bag (no heavier than 40 pounds). We also suggest bringing one daypack or small backpack for valuables. Please ensure your luggage container is water repellant.

A complete list of what we consider essentials for every trip, as well as items that can be rented from Escape Adventures, is available at www.escapeadventures.com/packing-lists/

TRIP COST INCLUDES

All meals starting with lunch on the first day through lunch on the last day, support vehicles, snacks, first-aid, bike maintenance, community gear, and a custom sublimated Limited Edition Jersey.



TRIP COST DOES NOT INCLUDE

Airfare to and from departure point, lodging before or after the tour, personal camping gear (if applicable), rental bike, or gratuities to Escape Adventures Trip Leaders. Tips to the Trip Leaders are given at your discretion and based on the quality of your experience. We suggest 10-20% of your trip cost to be divided between all Trip Leaders.

MEALS

Our Trip Leaders prepare all of your meals on our camping trips.

TRIP AMENITIES

First-class campers will enjoy well-maintained public campgrounds. Cell service for this tour is spotty, Verizon is the best service to have for this area.



KEEPING YOU UP TO DATE

We are always seeking opportunities to enhance this itinerary. We'll notify you of any changes prior to departure; other changes may be communicated on the trip by your Trip Leaders.

This is a general itinerary and may vary. Escape Adventures reserves the right to make changes due to weather, local conditions, government intervention, or any other unforeseen reasons that may affect the quality of the trip and/or safety of the participants. Inns are subject to change.

FIRST-CLASS CAMPING AT SPICER RANCH & MONARCH CANYON



There is nothing better than rolling into camp to fresh made chips and salsa, homemade guacamole and Dutch oven enchiladas. Then making your way to the inviting campfire, sharing your favorite anecdote or image from the day's activities while marshmallows roast. Enjoy a small-batch local beer before retiring to your tent where inside a sturdy raised cot, fluffy sleeping bag, and a plush full size pillow await.

We choose well-maintained public campgrounds with scenic vistas. The majority feature indoor facilities and showers. However, in more remote backcountry camping scenarios, we'll provide portable toilets and private solar showers.

CAMP GEAR RENTALS



Camping gear may be rented or you may bring your own. Our camp gear package includes a three-man tent with ground tarp, 30 degrees sleeping bag, bag liner, camp pillow, full-size cot and self-inflating ground pad.

El Portal Motel

420 Main St, Beatty, NV 89003

(775) 553-2912

<http://www.elportalmotel.com/>

A perfect blend of location, ambiance, and personal service, makes us the obvious choice for your Motel. Beatty Nevada is located just outside Death Valley National Park making it an ideal location to rest up from your daily adventures at the park. Beatty is known as the Gateway to Death Valley, because it is located just eight miles from the park. The vastness and quiet solitude of Death Valley combine for an unparalleled experience. Make the most of your Death Valley experience and stay at the El Portal Motel. Beatty has everything you need from breathtaking landscape to a place to relax from the day's activities.



Stovepipe Wells Hotel

Death Valley National Park, 51880 Highway 190, CA 92328

(760) 786-2387

www.deathvalleyhotels.com

Stovepipe Wells Village hotels, located right in Death Valley National Park is the ultimate destination for adventure travelers. Authentically western, rustic yet comfortable, Stovepipe Wells Village, with its unique hotel, Death Valley restaurant and Western saloon, has been at the end of the trail for vacationers since 1926. After hiking around the badlands, sand dunes and canyons, Stovepipe Wells hotels in Death Valley is more than a welcome sight with our friendly, knowledgeable staff, great food and cold drinks. It's a place where history is made and legends born. Isn't it time you made some of your own?



Element Las Vegas Summerlin

10555 Discovery Dr, Las Vegas, NV 89135

(702) 589-2000

www.elementlasvegassummerlin.com

Located in the heart of a vibrant community, the Element Summerlin is surrounded by first-class dining, shopping, and golf courses, and we're located just 15 minutes from the thrills and casinos of the famed Las Vegas Strip. Maintain your balance and be at your best with a state-of-the-art fitness center, refreshing pool and healthy food options. Bright and open multi-purpose public spaces are inspiring settings for work, play, socializing and unwinding. Recently-renovated open-flow guest rooms are designed to meet all your needs with fully-equipped kitchens, the signature Heavenly® Bed, and more, all thoughtfully arranged to rejuvenate you for work or play.



***MEET AT 9 A.M. ON THE FIRST DAY OF OUR TOUR. AFTER THE MEETING WE WILL SHUTTLE TO BEATTY, NEVADA AND THE ALL NEW SPICER RANCH MOUNTAIN BIKE PARK. WE WILL RETURN TO THE ELEMENT AROUND 3 P.M. ON THE LAST DAY OF THE TOUR.



ELEMENT HOTEL
1055 Discovery Drive
www.elementhotels.com
(702) 589-2000

Element offers a complimentary breakfast and an excellent rate for guests of Escape Adventures.

TRANSPORTATION IN LAS VEGAS

Transportation is available between McCarran International Airport and hotels on the Strip and downtown Las Vegas. More options available at www.mccarran.com

BELL TRANS

www.airportshuttlelasvegas.com
(800) 274-7433 or (702) 739-7990

Bell Trans offers shared shuttle service from the airport to the Strip for \$7-\$14.50 or downtown for \$17.50 per person. Purchase Tickets outside Door No. 9 at Terminal 1 and Door No. 52 at Terminal 3. The shuttle runs 24 hours

CITIZENS AREA TRANSIT (CAT) SYSTEM

www.catride.com
(800) 228-3911 or (702) 228-7433

The Paradise bus (No.108) departs the airport about every 30 minutes from below the baggage claim area at Terminal 1, Level (zero). There is a drop-off at the Sahara/SLS Monorail Station.

LAS VEGAS HOTELS

BELLAGIO
3600 Las Vegas BLVD S.
www.bellagio.com
(888) 987-6667

CAESARS PALACE
3570 Las Vegas BLVD S.
www.caesarspalace.com
(866) 227-5938

RED ROCK RESORT
11011 W. Charleston BLVD
www.redrock.sclv.com
(800) 211-9211 or (702) 365-5000

CANCELLATION POLICY

In order to keep our tours affordable and provide proper notice to our lodging partners, we must adhere to this timeline, no exceptions. After our refund deadline has passed we cannot provide a refund for any reason, including circumstances beyond your control such as weather-related travel delays, family emergency, or injury. There is also no partial refund if you arrive late to your tour, or depart early. Insurance agencies however, offer a full or partial refund in many circumstances if you purchase travel insurance to cover your tour. Payment in full is due 60 days prior to trip departure.

IF YOU CANCEL YOUR TRIP	YOU WILL RECEIVE
Up until 60 days prior to trip departure	100% of what you have paid minus a \$200 processing fee per person
59-45 days prior to trip departure	50% of what you have paid minus a \$200 processing fee per person
45-30 days prior to trip departure	15% of what you have paid minus a \$200 processing fee per person
29-0 days prior trip departure	No Refund

TRAVEL INSURANCE

We encourage you very strongly to purchase travel insurance to protect against extenuating circumstances such as illness and injury- believe us, they do come up! We have a special arrangement with TravelGuard insurance so that you may purchase reasonably-priced travel insurance at the same time you place your tour reservation. For a detailed description of the TravelGuard policy we offer, visit our website or call 866-385-4839 ask about product 007715.

TRANSFER POLICY

If you would like to change to a different tour or departure date after signing up, we will be happy to transfer you on a space available basis up until 60 days prior to your tour. Please provide your transfer request in writing - email is sufficient. Please note, a \$25 transfer fee will be deducted from your previous payments for each transfer, and if you later choose to cancel your tour, the cancellation deadlines will apply to the date of the originally scheduled tour.

TOUR CONFIRMATION

Escape confirms tours 60 days prior to tour departure; prior to this time, tours may be cancelled due to low enrollment. After your tour is confirmed, it will not be cancelled for low-enrollment, but in rare cases may be cancelled due to weather, government intervention, unsafe trail conditions, or any other reason that would affect the quality of the schedule tour or the safety of its participants. If we are forced to cancel your tour, we will provide a 100% refund and work to add you to another trip that works for you.

TRAVEL PLANS

We advise you to avoid non-refundable flights and other travel arrangements and are not responsible for the costs of such arrangement in the event your tour is cancelled. The travel insurance offered in conjunction with our tours covers the cost of your tour but does not cover additional costs such as travel to and from your tour departure location, and hotel stays prior to or following your tour. Please consider purchasing additional insurance coverage.



SIMILAR TRIPS FROM ESCAPE ADVENTURES

THE TRAIL OF THE ANCIENTS THE NEEDLES AND LOCKHART BASIN

-  Private Tours, Custom Tours
Solos, Couples & Friends
-  Apr, May, Sep, Oct
-  Departure: Moab, UT
-  Lodging: First-Class Camping
-  Duration: 6 Days
-  Technical Level: 2-3
-  Fitness Level: 2-3



East of the Colorado River, the Needles District of 330,000-acre Canyonlands National Park remains one of the most remote regions left in America.

THE MAZE & CATARACT CANYON MULTI-SPORT MOUNTAIN BIKE TOUR

-  Families with Older Kids, Families with Younger Kids, Private Tours and Custom Tours, Solos, Couples & Friends
-  Apr, May, Sep
-  Departure: Moab, Utah
-  First-Class Camping
-  Duration: 6 Days
-  Fitness Level: 2-3
-  Technical Level: 2-3



This tour combines the awesome sights and riding of the Maze, with a unique backcountry rafting expedition.